



**Marine Insurance
Broker**

Berizin dan Diawasi Otoritas Jasa Keuangan

COMPANY PROFILE

SURABAYA

Member of:

APPARINDO



LAPS SJK
Lembaga Asuransi Jasa Keuangan
Sektor Jasa Keuangan

Our Professional Team



Sridhani L. Pamungkas, S.M., M.M., CIIB.,
CRMO, QRMP.

Managing Director

✉ Sridhani@mibbroker.com



Elyda Wijaya, S.E.,
M.EC. DEV., CIIB., QRGP.

Non Technical Director

✉ Elyda@mibbroker.com



Rizky Fajar A. Hermawan, S.T., B.Eng., APAI.

Vice President of Business & Marketing

✉ Fajar@mibbroker.com



A. Valen Laurel, S.Ars

Head of Broking

✉ Valen@mibbroker.com



Achmad Khoirul Abidin, S.T

Head of Risk Management and Claim

✉ Khoirul@mibbroker.com



Fikri Al Rasyid

Head of Finance

✉ Fikri@mibbroker.com



Anisa Bella Safitri, S.M

Head of GA and Secretary

✉ Bella@mibbroker.com

Tailor-Made Marine Insurance Solutions

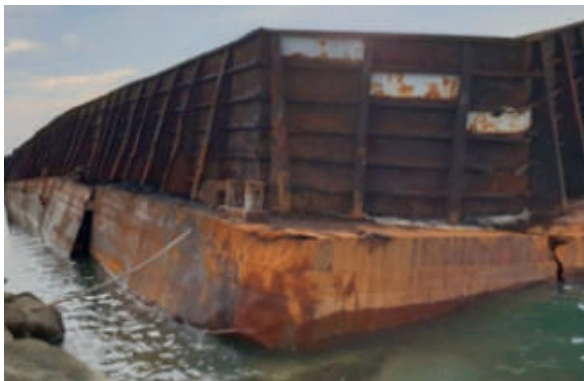
PT Marine Insurance Broker specializes in the design and development of bespoke marine insurance solutions, precisely tailored to the operational characteristics and risk profiles of ship owners and maritime businesses.

We place strong emphasis on risk clarity, coverage flexibility, and transparent structuring, ensuring that each policy is strategically aligned with the client's commercial objectives and regulatory environment. Our approach goes beyond standard placement—every solution is crafted to deliver measurable protection, operational confidence, and long-term value.

Our Services



Claims Management Excellence



We deliver end-to-end claims management services through a structured, transparent, and results-driven approach. Supported by an experienced and dedicated claims team, we ensure that every claim is handled with the highest standards of accuracy, professionalism, and timeliness—from initial notification and assessment through to final settlement.

By maintaining proactive communication, strict compliance with policy terms, and close coordination with insurers, surveyors, and other stakeholders, we safeguard our clients' interests throughout the claims process. Our commitment to efficient resolution and clarity at every stage reinforces client confidence and consistently supports optimal claim outcomes.

Kapalku i-Revolution - Marine Insurance



**PROTECTION AND INDEMNITY
(P&I)**



**HULL & MACHINERY
(H&M)**



**WRECK REMOVAL AND OIL
POLLUTION (WROP)**



SHIP REPAIR'S LIABILITY (SRL)



MARINE CARGO



BUILDER RISK

Non-Marine Insurance



PROPERTY ALL RISK



PROFESSIONAL INDEMNITY



PUBLIC LIABILITY



PERSONAL ACCIDENT



SURETY BOND



HEALTH

Vessel Risk Management (VRM)

VRM is a breakthrough initiative developed by PT Marine Insurance Broker, aimed at enhancing risk management for our fleet.

The program involves comprehensive assessments through onboard inspections, crew interviews, and consultations with the key persons from the shipowners. We further conduct an in-depth analysis of the collected data and deliver actionable recommendations designed to improve the overall quality, safety, and operational performance of our clients' vessels.



Claim Portofolio



Protection & Indemnity

The barge hit villagers' houses and properties with total claim of IDR 12 Bio. Claim settled in 1 month with only IDR 5 Bio.



Hull & Machinery

Tanker's Engine Damage with IDR 5 Bio claim settled in 3 months.



Protection & Indemnity

SPOB hit PERTAMINA's property with amount of IDR 36 Bio settled in 1,5 months.



Hull & Machinery

The barge is broken and becoming constructive total loss with amount of claim of IDR 14 Bio settled in 2 months.



Protection & indemnity

The tanker caught fire at anchorage. Total claim IDR 800 Mio for oil pollution prevention. Claim settled within 4 months.



Hull & Machinery

The vessel's propeller was damaged and detached. The vessel was towed to shipyard for repairs, total claim IDR 2.5 bio settled 1 month after invoice submission.



Protection & Indemnity

Crew passed away while on duty on the vessel due to illness with total claim IDR 150 Mio. Claim settled in 2 months

“PT Marine Insurance Broker Ensuring the Claim to be settled to the Shipowners satisfaction within short time.”

Our Gallery



**CONTACT
US** →



+62 821-1321-3208



group@mibbroker.com



@mibinsurancebroker



PT Marine Insurance Broker



www.marineinsurancebroker.id